

TIME TO GLOW

eleven
luxury properties
sold this week!

For a no-obligation market evaluation on your property, please engage with Tweedie >>

SALES & RENTALS BY TWEEDIE



FORESHORE
R5 995 000

2 BED 2 PARKING BAYS
2 BATH 186 M²

The building is situated a short walk away from the V&A Waterfront, the famous Silo District as well as... [continue reading >>](#)



FORESHORE
R5 500 000

2 BED 2 PARKING BAYS
2 BATH 137 M²

Canal Quays is an upmarket residential building situated along the Foreshore Canals... [continue reading >>](#)

FORESHORE | R4 800 000



1 BED 1 BATH 98 M²

[CLICK TO READ MORE >>](#)

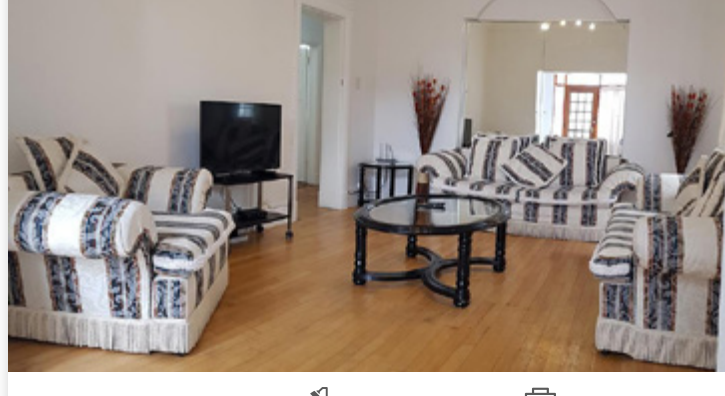
FORESHORE | R4 200 000



1 BED 1 BATH 78 M²

[CLICK TO READ MORE >>](#)

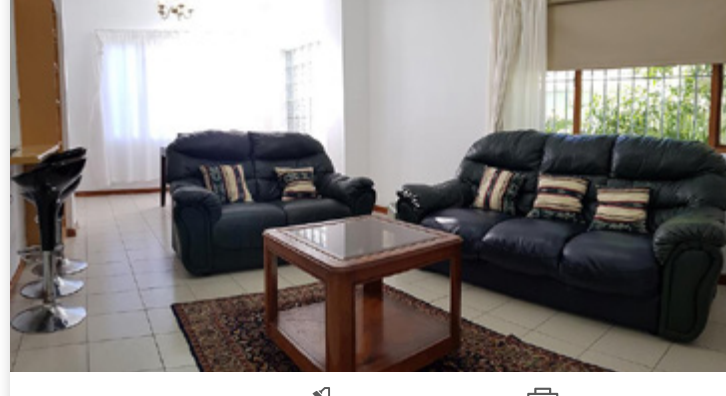
BANTRY BAY | R3 800 000



2 BED 1.5 BATH 90 M²

[CLICK TO READ MORE >>](#)

BANTRY BAY | R3 200 000



2 BED 1 BATH 90 M²

[CLICK TO READ MORE >>](#)

FRESNAYE | R48 000



5 BED 4 BATH 767 M²

[CLICK TO READ MORE >>](#)

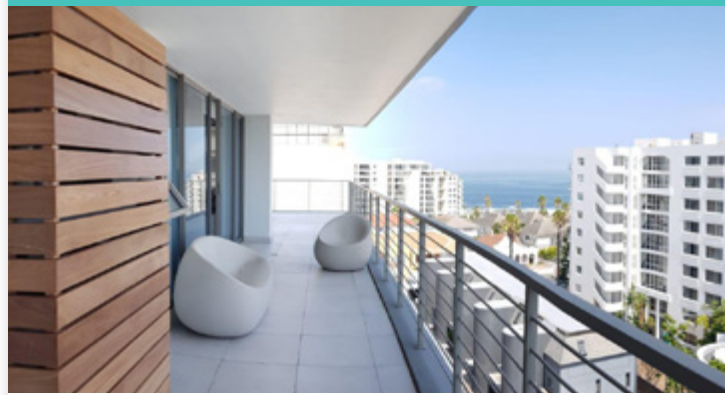
SEA POINT | R44 000



2 BED 2.5 BATH 272 M²

[CLICK TO READ MORE >>](#)

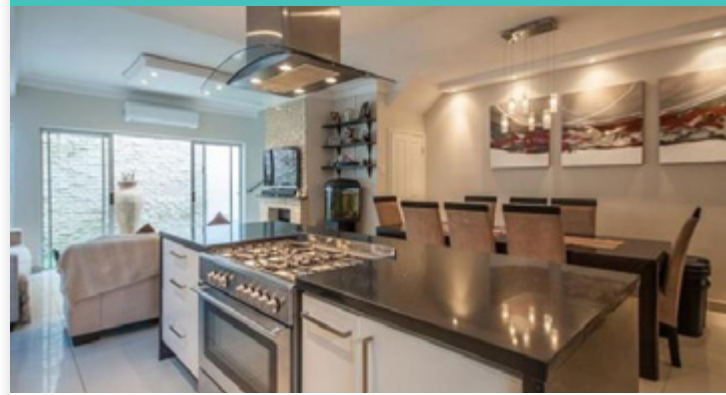
SEA POINT | R35 000



3 BED 2 BATH 82 M²

[CLICK TO READ MORE >>](#)

SEA POINT | R30 000



3 BED 2.5 BATH 129 M²

[CLICK TO READ MORE >>](#)

BANTRY BAY | R28 000



2 BED 2.5 BATH 131 M²

[CLICK TO READ MORE >>](#)

BANTRY BAY | R25 000



2 BED 2 BATH 111 M²

[CLICK TO READ MORE >>](#)

BANTRY BAY | R23 000



2 BED 2.5 BATH 144 M²

[CLICK TO READ MORE >>](#)

3 ANCHOR BAY | R20 000



2 BED 2 BATH 85 M²

[CLICK TO READ MORE >>](#)

SEA POINT | R18 500



2 BED 2 BATH 105 M²

[CLICK TO READ MORE >>](#)

BANTRY BAY | R18 000



2 BED 2 BATH 1 PARKING BAY

[CLICK TO READ MORE >>](#)